



POWER CONVERSION | DISPLAY TECHNOLOGY | INDUSTRIAL COMPUTING

RE-REQUEST › RE-FINE › RE-SULT

**SPECIALIST DISTRIBUTOR OF POWER  
CONVERSION, DISPLAYS, AND  
INDUSTRIAL COMPUTING SOLUTIONS,  
SUPPORTING ENGINEERS ACROSS  
DIVERSE INDUSTRIES.**

## WHO WE ARE



RELEC Electronics was founded in 1978 with a clear purpose: to support engineers with expert-led power conversion and display solutions. These days, that support also extends to industrial computing, giving our customers even more choice when it comes to specifying the right technology for the job.

**We don't push products, we partner with you.**

## BECAUSE STANDARD IS JUST THE BEGINNING.

**What sets RELEC apart is our understanding of your application, and the insight to recommend the right-fit solution.**

Whether it's ac-dc power supplies, dc-dc converters, TFT displays, rugged tablets, or embedded PCs, we don't just ask what you want – we think about what you really need.

Our aerospace heritage underpins everything we do: robust, reliable, and high-performing

solutions, delivered with the attention to detail you'd expect from a company used to tight tolerances and critical systems. And yes, we'll happily go the extra mile, whether that means customising a unit, tweaking firmware, or helping you navigate certification requirements.

We've stuck to these principles since day one. It's how we became one of the first in our sector to achieve ISO9001, back in 1991 – using our own team, not external consultants.



## WHAT WE DO / HOW WE WORK

### RE:REQUEST

Start with a conversation, by phone, email, or web form. Our team of qualified engineers will take the time to understand your application, environment, and goals. We're not here to push products; we're here to solve problems.

### RE:FINE

A standard solution is rarely the final answer. We work closely with you to fine-tune recommendations, whether that's tailoring features, adjusting formats, or adding certifications, to make sure the solution fits perfectly.

### RE:RESULT

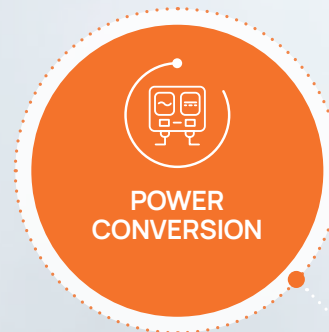
What you get isn't just a product, it's a reliable, application-ready solution. Backed by expert guidance, fast lead times, and long-term support, we aim to make a measurable difference to your project from start to finish.



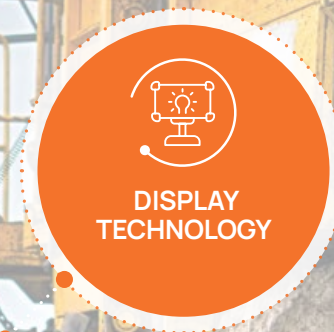
THE VALUE WE GIVE

**OFFERING OUR KNOWLEDGE  
AND SUPPORT**

## OUR CORE PRODUCT FAMILIES



POWER  
CONVERSION



DISPLAY  
TECHNOLOGY



INDUSTRIAL  
COMPUTING



ACCESSORIES  
& ENHANCEMENTS/  
CUSTOM DESIGNS

### INDEPENDENT ADVICE

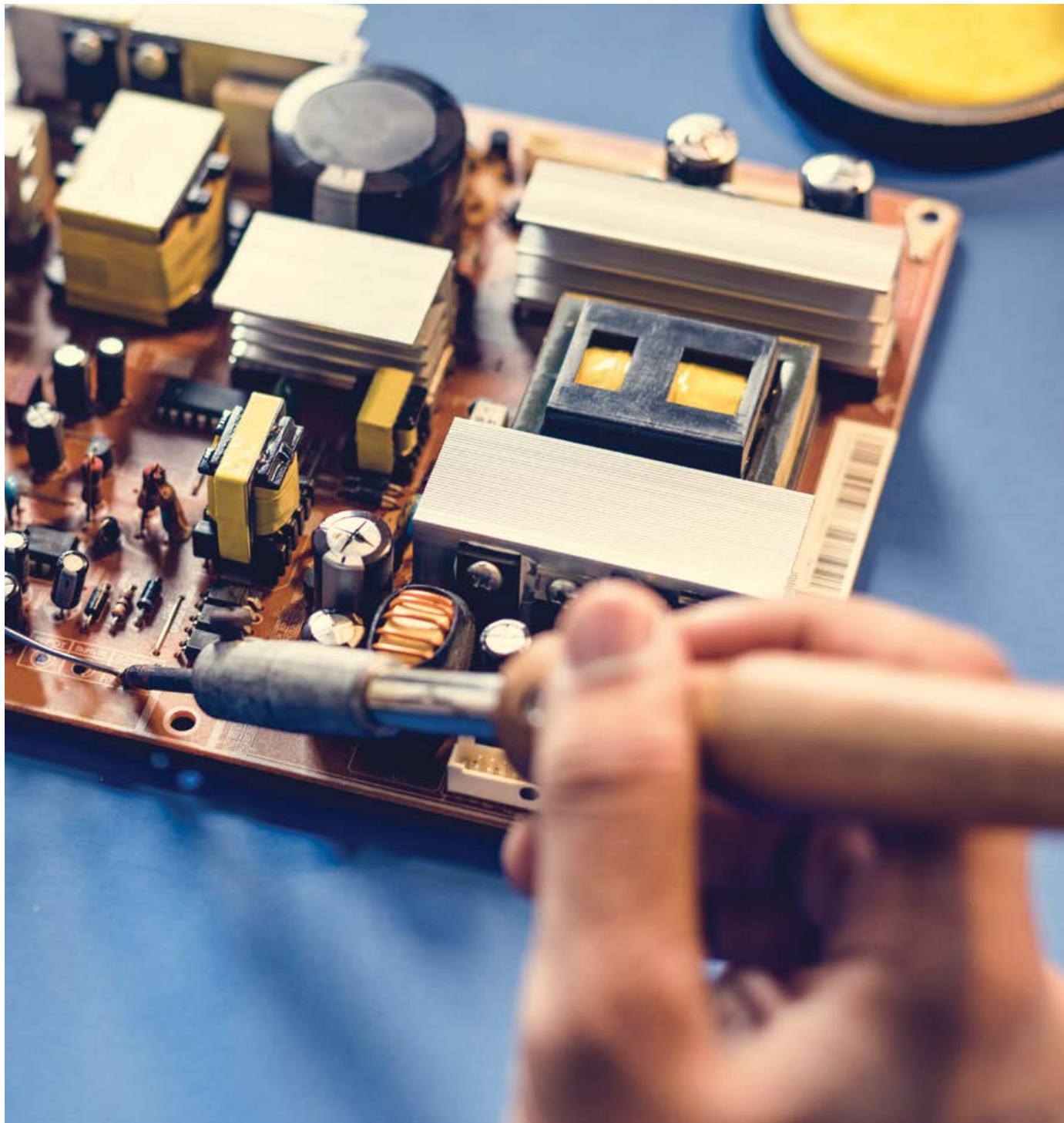
We're not tied to one brand - solutions fit the project, not the other way around.

### ENGINEERING EXPERTISE

We speak your language - every recommendation backed by deep technical understanding.

### SUPPORT BEYOND SUPPLY

From design reviews to customisation and end-of-life planning, we're with you every step (and future steps).



# POWER CONVERSION

Reliable, efficient, and engineered to perform — our ac-dc, dc-dc, and dc-ac solutions keep your systems running smoothly. From board mount to DIN rail, we've got the power covered.





## POWER CONVERSION

# AC-DC POWER SUPPLIES

An ac-dc power supply is a fundamental building block in the design of almost all mains-powered electrical and electronic equipment.



**CERTIFIED FOR CRITICAL APPLICATIONS**

**COMPACT FORMAT, FULL SPEC**



**FULLY CONFIGURABLE**

We can source and supply the widest range of ac-dc PSUs from plugtop, desktop or PCB mounting device, through to very large battery backed standby systems that can be 19" rack mounted.

RELEC can provide chassis-mounted power

supplies in a variety of configurations, single, dual, or quad outputs alongside industry-standard modules and fully configurable solutions. Power ratings start at 1W and scale right up to 24kW, giving you flexibility for everything from low-power automation to high-demand industrial systems.

## INDUSTRIES SERVED

INDUSTRIAL DEFENCE MEDICAL RAIL E-MOBILITY  
INSTRUMENTATION TELECOMS



DISCOVER  
MORE

CLICK  
HERE



**BATTERY CHARGERS**  
DC UPS Systems



**CHASSIS MOUNT**  
Advanced Thermal Management



**CONFIGURABLE**  
Modular & Customisable



**CONDUCTION/BASEPLATE**  
Cooling Methods



**DESKTOP POWER**  
Ideal for Medical



**DIN-RAIL MOUNT**  
Single & Three-phase Options



**IP RATED**  
Rugged Design



**PCB MOUNT**  
Certified for Global Compliance



**OPEN FRAME**  
Cost-saving Solutions



**PROGRAMMABLE**  
Laboratory Power Supplies



**PLUGTOP**  
Custom Options Available



**19" RACK MOUNT**  
Hotswap Functionality

## POWER CONVERSION

# DC-DC CONVERTERS

We've been specifying and supplying dc-dc converters since 1978, supporting applications from automotive to aerospace.



SIP, DIP, AND DIN FORMATS

WIDE INPUT RANGES  
(2:1, 4:1 & 16:1)

BUILT TO MEET GLOBAL STANDARDS

Our range spans from miniature 1W SIP modules to powerful 6kW high-voltage converters, covering everything in between.

RELEC provides isolated and non-isolated converters in regulated and unregulated formats. Whether you're working with 3V or 400V inputs, we can deliver outputs as low as 0.8V and as high as your application demands. Choose from fixed, 2:1, 4:1 & 16:1 wide input ranges, in

packages from SIP to full bricks, available with convection or conduction cooling.

When off-the-shelf doesn't quite cut it, our team is on hand to help. We'll advise on BUS voltages, thermal considerations, and even support fully customised designs. And because we hold stock of key modules, we can help you move from design to delivery.

## INDUSTRIES SERVED

INDUSTRIAL DEFENCE MEDICAL RAIL E-MOBILITY  
INSTRUMENTATION TELECOMS



DISCOVER  
MORE

CLICK  
HERE



**BI-DIRECTIONAL CONVERTERS**  
Ideal for E-Mobility



**CHASSIS MOUNT**  
Flexible Configurations



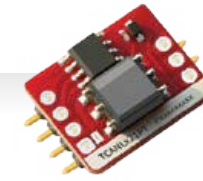
**CONDUCTION OR BASEPLATE**  
Cooling Methods



**DIN RAIL MOUNT**  
Industrial-Grade



**IP RATED**  
Ideal for Outdoor Use



**ISOLATED BUS TRANSCEIVER MODULES**  
CAN/RS485/RS232



**NON ISOLATED / POL CONVERTERS**  
Wide Input Voltages



**PCB MOUNT**  
Reliable Low-Power



**RACK MOUNT**  
Semi Custom Solution Options



**SURFACE MOUNT**  
Isolated & Non Isolated POL

## POWER CONVERSION

# DC-AC INVERTERS

We supply a versatile range of dc-ac inverters, designed to convert dc input power into a clean, reliable ac output, ideal for off-grid, rail, industrial, and vehicle-based applications.



**PURE SINEWAVE.  
PURE CONFIDENCE.**



**EMC & SAFETY  
COMPLIANT**

Our inverters cover 180W to 6400W, with inputs from 12Vdc to 1kVdc and outputs from 115/230Vac single-phase to 400Vac three-phase. From motor frequency control to Redundant IP-rated fanless designs with for rolling stock, we can help.

From DIN-rail and chassis-mount to IP-rated, enclosed formats, our inverter range covers both standard and custom requirements. Our technical team can guide you through thermal considerations, redundancy, and integration into your wider power architecture.

## INDUSTRIES SERVED

INDUSTRIAL RAIL  
TELECOMS



DISCOVER  
MORE

CLICK  
HERE



**CHASSIS MOUNT**  
EN50155 Compliant Inverters



**RACK MOUNT**  
True Sine Wave Outputs



**VARIABLE  
FREQUENCY DRIVES**  
Precise Control & Regulation

# "WE NEED STARLINK TECHNOLOGY ON TRAINS"

## CASE STUDY

# A RAIL TEAM WANTED TO BRING STARLINK INTERNET ONBOARD UK TRAINS.

## REQUEST

The challenge?

Starlink runs on 230Vac, but trains supply 24-110V DC.

They needed a compact, rail-approved inverter to bridge the gap, and they turned to Relec.

## REFINE

We recommended the ODS-750: a rugged dc-ac inverter with 230Vac output and models for all standard rail voltages.

We worked with their engineers on input choice, mounting, ventilation, and wiring, supporting them from concept to install.

## RESULT

With the ODS-750 onboard, Starlink now delivers seamless Wi-Fi to passengers.

The inverter's compact size and EN50155 compliance made rollout smooth, proof that Relec powers more than just hardware.





## POWER CONVERSION

# EMC FILTERS

We offer one of the most comprehensive ranges of EMC filters and chokes available, helping you tackle both conducted and radiated emissions from the start of your design.

### SINGLE & THREE-PHASE EMC CONTROL

### SUPPRESS NOISE AT THE SOURCE

### COMPACT. COMPLIANT. CUSTOMISABLE.

Our range spans from 1A to 1100A, with filters for single-phase and three-phase systems across low (150 kHz–30 MHz) and high-frequency (30 MHz+) interference ranges. Whether you're protecting industrial control systems or sensitive medical equipment, we've got options for you.

We also supply common-mode chokes, differential-mode inductors, and power entry modules with built-in EMC suppression. Custom options with fuses, switches and voltage selectors are available, giving you a plug-and-protect solution, without compromise.

## INDUSTRIES SERVED

INDUSTRIAL DEFENCE MEDICAL RAIL  
E-MOBILITY TELECOMS



## NEED SOMETHING A LITTLE MORE **BESPOKE?**

For the right projects, we offer custom power solutions tailored to specific requirements. Get in touch to see if your brief fits the bill.







# DISPLAY TECHNOLOGY

We believe a proud 40 year history in the displays' business constitutes a 'specialist'.

It means we are able to listen, advise and recommend the best products sourced from a wide range of display technologies.





## DISPLAY TECHNOLOGY

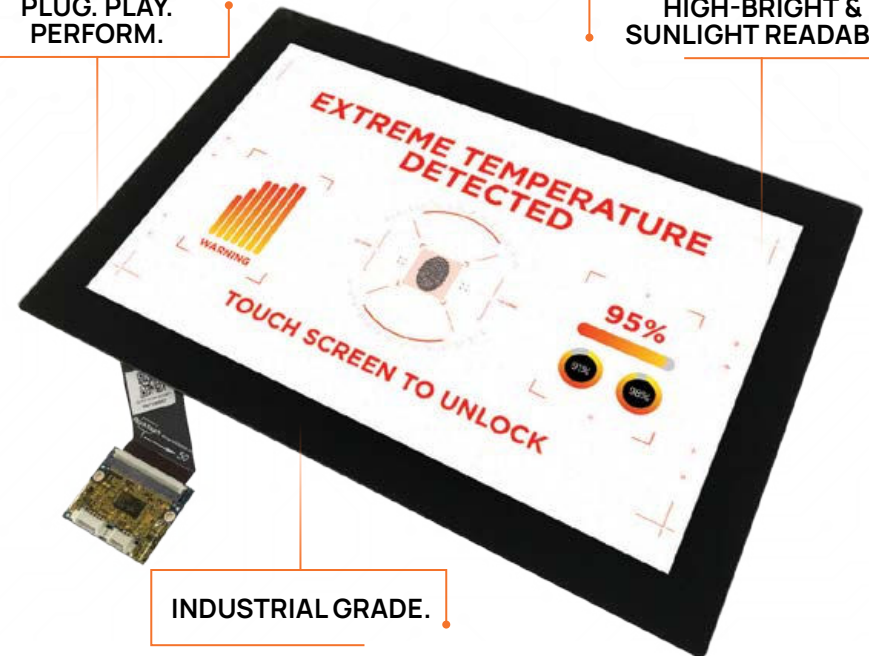


# TFT, HDMI & IPS DISPLAYS

From compact 1.77" modules to 31.5" full-HD panels, we offer an extensive range of TFT, HDMI, and IPS displays built to thrive in industrial, medical, rail, and defence environments.

**PLUG. PLAY.  
PERFORM.**

**HIGH-BRIGHT &  
SUNLIGHT READABLE**



**INDUSTRIAL GRADE.**

Options include high-brightness, sunlight-readable screens, as well as resistive and capacitive touchscreens, all available in standard or customised formats.

Looking for better angles? Our IPS displays deliver consistent colour accuracy and wide viewing angles, ideal for kiosks, multi-user HMI's, and medical monitors. Need simplicity? Our USB-C displays offer single-cable integration for

power, video, and touch, cutting wiring, cost, and complexity without sacrificing performance.

Whether you need a rugged TFT panel for outdoor use or a plug-and-play HDMI display for rapid deployment, our in-house experts can support you with selection, integration, and enhancements. From optical bonding to custom bezels, we help engineers achieve the perfect visual fit.

## INDUSTRIES SERVED

**INDUSTRIAL** **DEFENCE** **MEDICAL**  
**RAIL** **AUTOMOTIVE**



**DISCOVER  
MORE**  
**CLICK  
HERE**

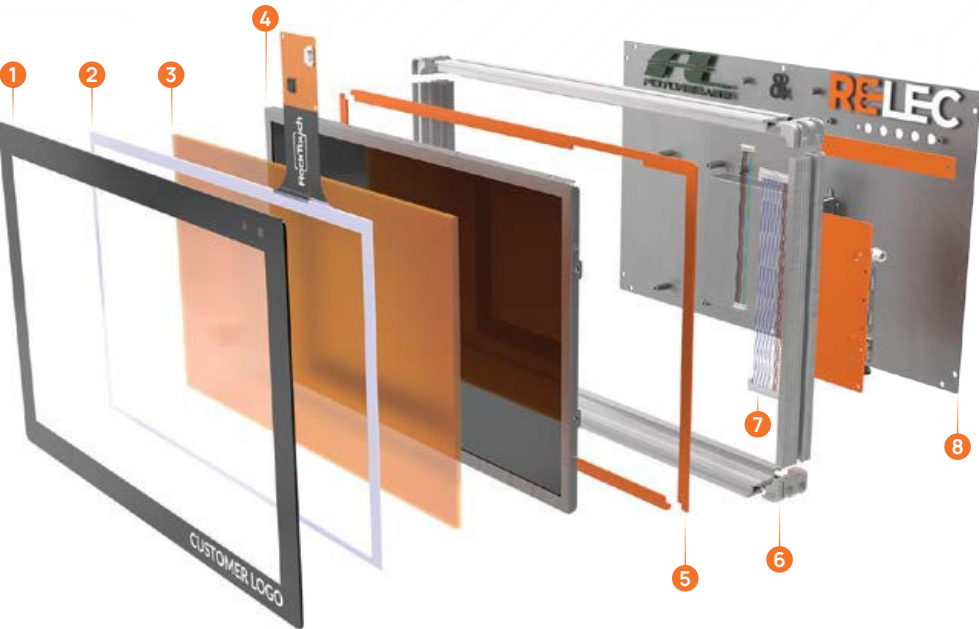


DISPLAY TECHNOLOGY



SCREEN ENHANCEMENTS  
& CUSTOMISATION

Standard displays don't always cut it. That's why we offer a full suite of enhancements. These upgrades improve readability, durability, and performance, so your display works exactly how and where you need it to.



- 1

Cover lens
- 2

Touch screen sensor and controller
- 3

Factory optical bonding lamination
- 4

Display Technology
- 5

DSA or glue
- 6

Mechanical design integration
- 7

Cables
- 8

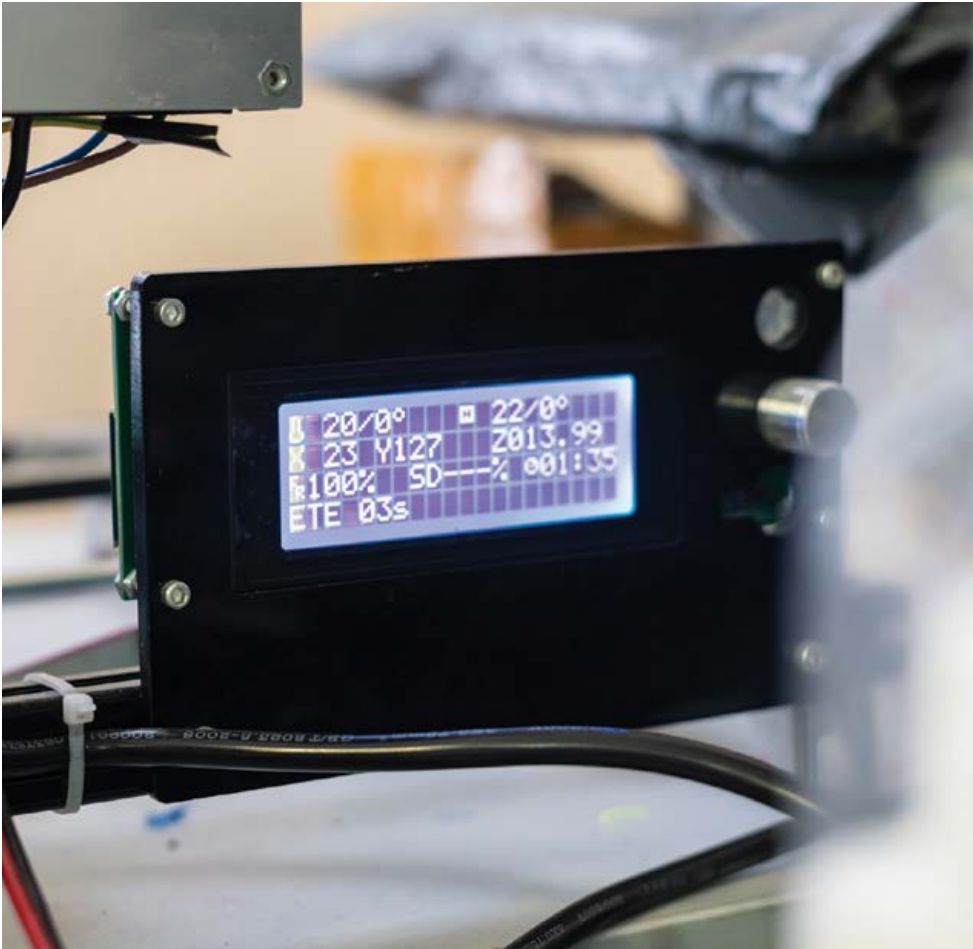
Interface conversion boards

DISPLAY TECHNOLOGY



LEGACY & MONO LCDS

We've been supplying custom and standard monochrome displays for nearly 40 years, from simple glass panels to complete modules. TN, STN, ISTN, and BCD technologies are available, with optional touch panels, barcoding, and onboard circuitry. Long-running projects. Fully tested and production-ready.



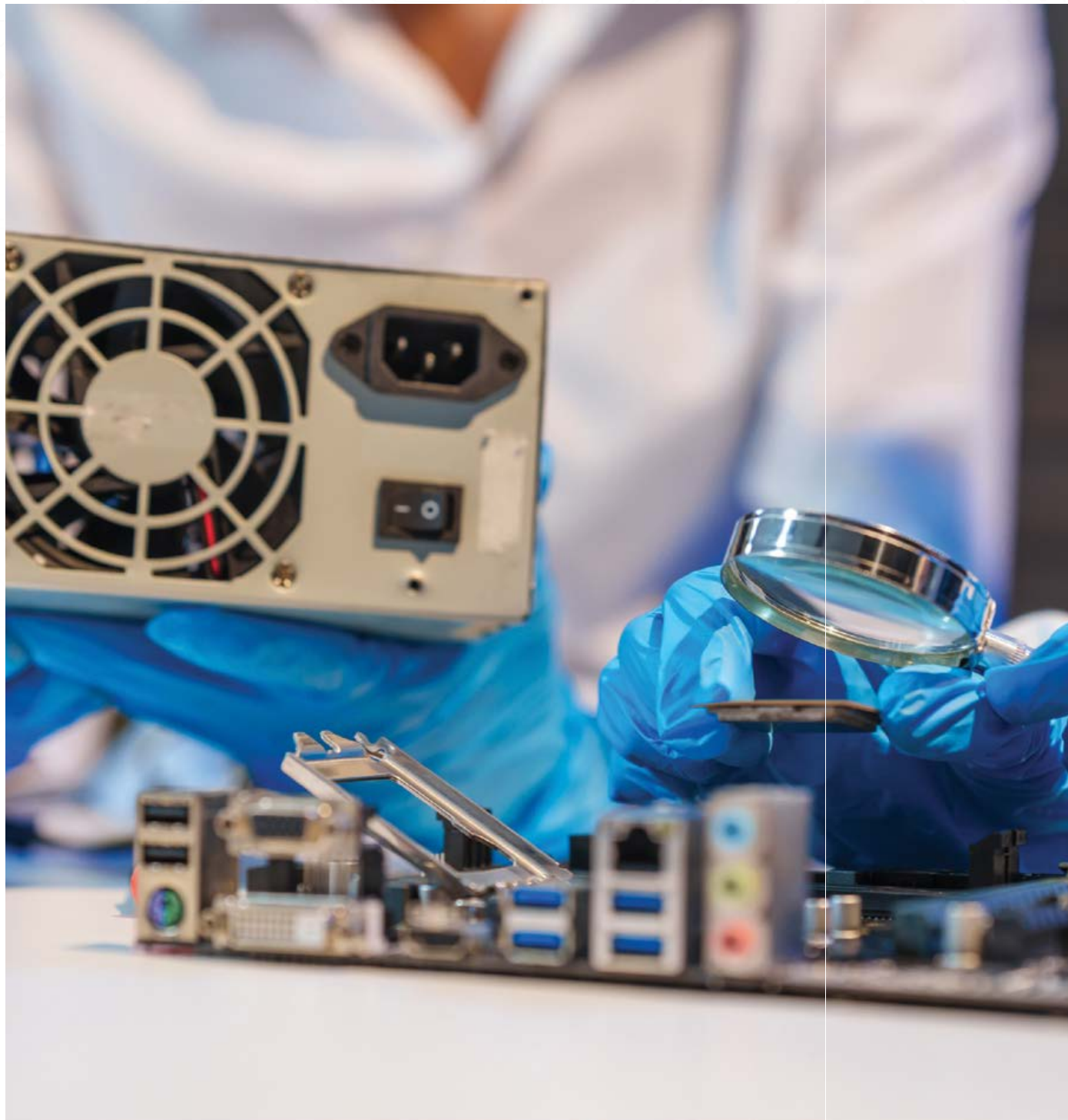
INDUSTRIES SERVED

- INDUSTRIAL
- DEFENCE
- MEDICAL
- RAIL
- EV



DISCOVER MORE

CLICK HERE



# INDUSTRIAL COMPUTING

Industrial Computers, where cutting-edge performance meets the rugged reliability you need for mission-critical applications.

Whether you're optimising for tight spaces, extreme environments, or AI-driven workloads, our range of industrial computers delivers unmatched versatility and durability.





## INDUSTRIAL COMPUTING

# INDUSTRIAL PCS

From space-limited enclosures to harsh outdoor environments, our industrial PCs are built for real-world demands.



EN, UL & IP-RATED FOR INDUSTRIAL USE

AI ACCELERATORS & NVIDIA JETSON™



BUILT FOR FIELD & FACTORY USE

Available in compact, embedded, and ruggedised formats, they combine Intel® or AMD processors with fanless design, extended temperature ranges, and rock-solid reliability.

Our range includes IP-rated enclosures for water and dust resistance, wide voltage inputs, and rich I/O connectivity. Whether you're integrating edge AI, deploying machine vision, or managing automation systems, we've got a system that

fits, physically and functionally.

Need next-gen processing at the edge? Our AI-ready platforms include Nvidia Jetson-based solutions for autonomous control, robotics, and industrial IoT. Pre-tested, project-ready, and backed by Relec's expert team, you get the performance you need, with the peace of mind you want.

## INDUSTRIES SERVED

INDUSTRIAL DEFENCE MEDICAL  
TRANSPORTATION IN-VEHICLE



DISCOVER MORE

CLICK HERE



### WE OFFER

- EDGE COMPUTING
- COMPACT FANLESS PC
- EMBEDDED PC
- RUGGEDISED PC

## INDUSTRIAL COMPUTING

# RUGGED TABLETS

RELEC's rugged tablets combine a high-quality TFT display, single board computer, and long-life battery into a single, sealed unit—built to perform where standard devices fail.

**CERTIFIED FOR MEDICAL  
& INDUSTRIAL USE**

**UP TO 8 HOURS  
BATTERY LIFE**



**DUAL CAMERAS. NFC.  
SCANNERS.**

Whether it's factory floors, hospital wards, or out in the field, these tablets thrive in demanding environments.

Available in sizes from 5" to 14", models include options certified to EN60601 for medical use. Key specs include up to 32GB RAM, 1TB SSD, and integrated features like WiFi, Bluetooth, NFC, dual cameras, light sensors, and up to 8 hours

of battery life. Windows and Android OS options keep things flexible.

**Need extra functionality?** Our range of accessories includes barcode scanners, fingerprint readers, smart card readers, docking cradles, and multi-unit chargers. With rugged reliability and modular options, these tablets work just as hard as you do.

## INDUSTRIES SERVED

**INDUSTRIAL** **DEFENCE**  
**MEDICAL** **RAIL**



DISCOVER  
MORE

CLICK  
HERE



## ACCESSORIES

Complete your setup with our range of rugged tablet accessories—designed to enhance performance, protection, and portability in any environment.



VEHICLE  
CHARGER



WIDE VOLTAGE  
MODULE



M12 FUNCTION  
ADAPTER



SHOULDER  
STRAP



WRIST  
STRAP



POWER  
ADAPTER



REMOVABLE  
BATTERY



DOCKING  
STATION



BATTERY  
CHARGER



MOUNTING  
HOLDER





## INDUSTRIAL COMPUTING



# PANEL PCs, INDUSTRIAL MONITORS & TOUCH PANELS

Our industrial panel PCs and monitors combine precision, resilience, and flexibility, designed for harsh environments and mission-critical applications.

PCAP TOUCH.  
OPTICAL BONDED.

DAYLIGHT READABLE  
IPS DISPLAYS



BUILT TO EN 50155,  
IEC 60601 & MORE

Sizes range from 7" to 70", with touchscreen interfaces, fanless CPUs, and rugged enclosures built to industry standards like EN 50155, and UL 62368-1.

Our panel PCs integrate high-resolution TFT displays, capacitive or resistive touch panels, and single board computers, all in a sealed, all-in-one design. For mounting into existing enclosures, our open-frame and enclosed monitors offer

daylight readability, IPS viewing angles, and rapid installation via VESA or flange brackets.

From factory automation and food processing to rail, marine, and medical applications, our range offers stainless steel, IP67, IP69K, and sunlight-readable options, with sample availability in weeks, not months. We also offer optical bonding, anti-glare coatings, and environmental enhancements to suit any application.

## INDUSTRIES SERVED

INDUSTRIAL

DEFENCE

MEDICAL

RAIL

EV



DISCOVER  
MORE

CLICK  
HERE



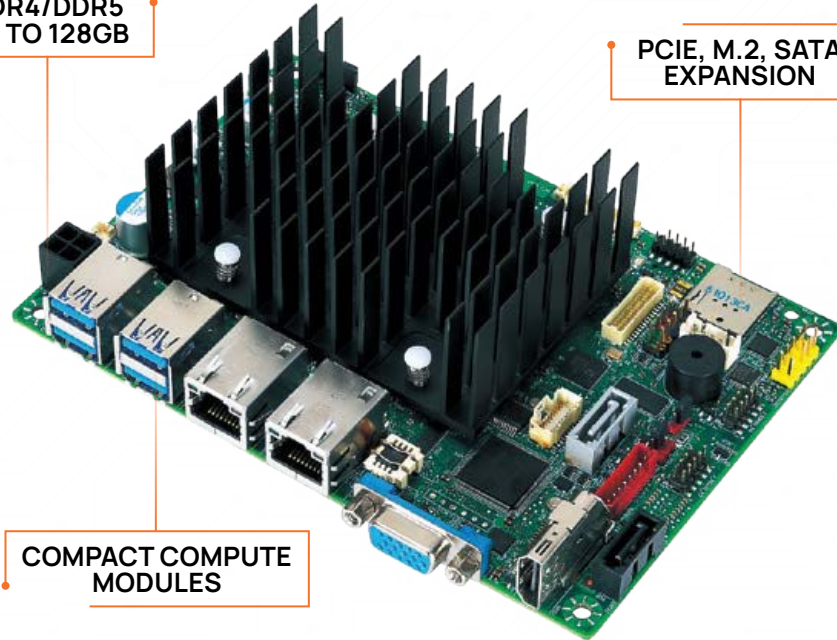
# MOTHERBOARDS & SYSTEM-ON-MODULES

We offer a robust selection of industrial motherboards in Thin Mini-ITX, MicroATX, and full-size ATX form factors, tailored for use in manufacturing, defence, medical, and transportation sectors.

DDR4/DDR5  
UP TO 128GB

PCIe, M.2, SATA  
EXPANSION

COMPACT COMPUTE  
MODULES



With support for the latest Intel® and AMD® processors, plus high-capacity DDR4/DDR5 memory, our boards are designed to deliver rock-solid performance and long-term reliability.

From mission-critical control systems to 24/7 surveillance platforms, our boards feature wide operating temperature support, rich I/O, multiple PCIe and M.2 expansion options, and up to 128GB memory configurations. With display outputs including HDMI, DisplayPort and LVDS, these

boards are made to integrate cleanly into your system—whether you're building for automation, imaging, or embedded AI.

Need even more flexibility? Our range of System-on-Modules (SoMs), including SMARC, Qseven, and COM Express formats, offer scalable, off-the-shelf compute solutions powered by Intel®, AMD®, and ARM architectures, ideal for custom embedded builds where space is tight, but performance can't be compromised.

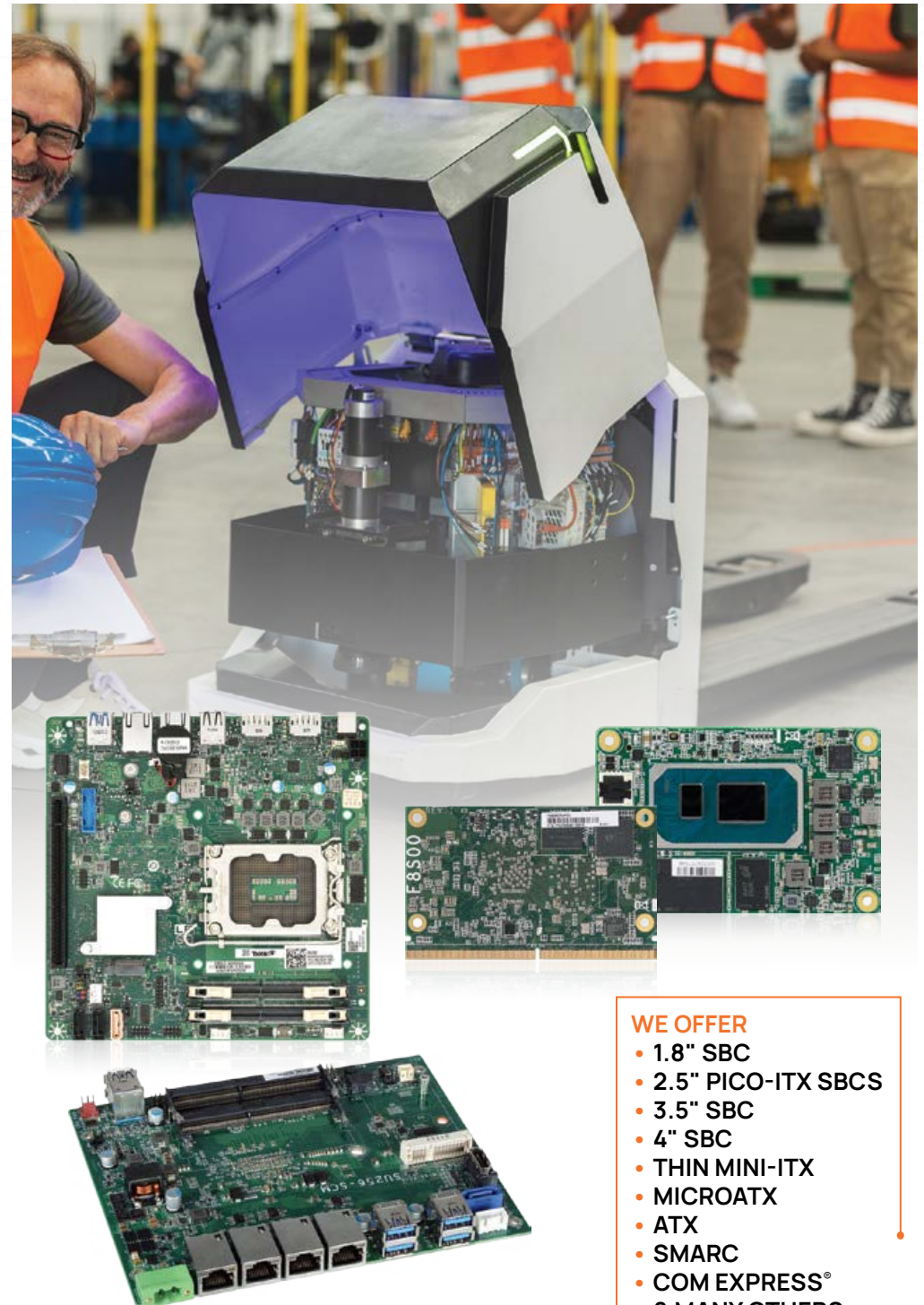
## INDUSTRIES SERVED

INDUSTRIAL DEFENCE MEDICAL  
TRANSPORTATION IN-VEHICLE



DISCOVER  
MORE

CLICK  
HERE



### WE OFFER

- 1.8" SBC
- 2.5" PICO-ITX SBCS
- 3.5" SBC
- 4" SBC
- THIN MINI-ITX
- MICROATX
- ATX
- SMARC
- COM EXPRESS®
- & MANY OTHERS



## OUR PARTNERS

|   |  |  |
|---|--|--|
| <b>AIPUPOWER®</b>                           |  | <b>Advanced Energy</b>                                 |
| <b>ADELSYSTEM</b>                           |  | <b>bel</b> POWER SOLUTIONS & PROTECTION<br>a bel group |
| <b>COSEL</b>                                | <b>CINCON</b>                          | <b>COTEK</b>   |
| <b>CALEX</b>                                |  | <b>CHINFA</b>  |
| <b>DFI</b>                                  | <b>DW</b> DigiWise                     | <b>EDACPOWER</b>                                       |
| <b>FUTURELABS</b>                           | <b>LITEON</b> ®                        | <b>MACTRON</b> GROUP                                   |
| <b>MITAC</b> MITAC DIGITAL TECHNOLOGY CORP. | <b>Premium</b> Powering Your Challenge |  |
| <b>VOXPOWER</b>                             | <b>Wincomm</b>                         |  |

**WE ONLY USE THE BEST  
MOST TRUSTED BRANDS**

## WHY RELEC?

# RELEC



### EXPERTISE-LED

Decades of know-how guiding every recommendation, because good advice beats guesswork.



### COLLABORATIVE

We're with you every step of the way, from concept to completion.



### SOLUTION-FOCUSED

We don't just sell products. We solve problems with the right component for the right job.

### IN-STOCK SUPPORT FOR KEY LINES

While not every product is on the shelf, we carry stock of popular lines to provide flexibility when timing is critical.

### COMPLIANCE ASSISTANCE (EN50155, EN62368, ETC.)

Navigating compliance doesn't have to be a headache. We'll help you make sense of the standards and provide advice on meeting railway, medical, industrial or safety regulations with confidence.

### FAST ADVICE FROM ENGINEERS FROM START TO FINISH

Speak to real engineers, not sales scripts. From design concepts to installation queries, our technical team is with you every step of the way.

### FULL DOCUMENTATION SUPPORT (GERBER, 3D FILES, CE PACKS)

From mechanical drawings to certification packs, we make integration easier. Get access to everything you need for design, manufacturing, and approvals.



CONTACT US

LET'S MAKE THIS EASY.

**CALL:** +44 (0) 1929 555 700

**EMAIL:** SALES@RELEC.CO.UK

**VISIT:** WWW.RELEC.CO.UK

GO TO OUR  
WEBSITE

CLICK  
HERE



RELEC

**THE SPECIALISTS IN  
POWER CONVERSION  
& DISPLAYS**





# STANDARD IS JUST THE BEGINNING



CLICK  
HERE



**RELEC**

Relec Electronics Ltd.

Animal House, Justin Business Park, Sandford Lane, Wareham, Dorset, BH20 4DY.