

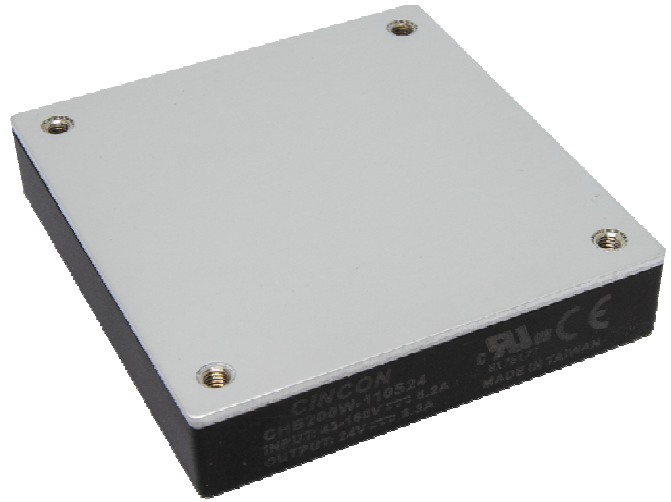


CHB200W-110S SERIES

200 WATT 4:1 INPUT DC-DC CONVERTERS

FEATURES

- * 200W Isolated Output
- * Efficiency to 91%
- * Low No Load Power Consumption
- * Fixed Switching Frequency
- * 4:1 Input Range
- * Regulated Outputs
- * Input Under-Voltage Protection
- * Over Temperature Protection
- * Over Voltage/Current Protection
- * Remote On/Off
- * Half-Brick Size Meet Industrial Standard
- * UL60950-1 2nd (Basic Insulation) Approval
- * Meet EN50155 with External Circuits
- * Shock & Vibration Meet EN50155 (EN61373)
- * Fire & Smoke Meet EN45545-2
- * 5000m Operating Altitude



MODEL NUMBER	INPUT VOLTAGE	OUTPUT VOLTAGE	OUTPUT CURRENT		INPUT CURRENT		% EFF. (2)	CAPACITOR LOAD MAX.
			MIN.	MAX.	NO LOAD	FULL LOAD		
CHB200W-110S05	43-160 VDC	5 VDC	0 mA	40 A	10 mA	2043 mA	89	40000uF
CHB200W-110S12	43-160 VDC	12 VDC	0 mA	16.7 A	10 mA	2002 mA	91	16700uF
CHB200W-110S24	43-160 VDC	24 VDC	0 mA	8.3 A	10 mA	2034 mA	89	8300uF
CHB200W-110S28	43-160 VDC	28 VDC	0 mA	7.14 A	10 mA	2042 mA	89	7140uF
CHB200W-110S48	43-160 VDC	48 VDC	0 mA	4.2 A	10 mA	2014 mA	91	3000uF

NOTE:

1. Nominal Input Voltage 110 VDC.
2. Measure at Nominal Input Voltage.
3. An external input capacitor 220uF for all models are Recommended to Reduce Input Ripple Voltage.

